



# GMT MONTHLY MEMBERSHIP PROGRESS REPORT

Results as of: 2/29/2020

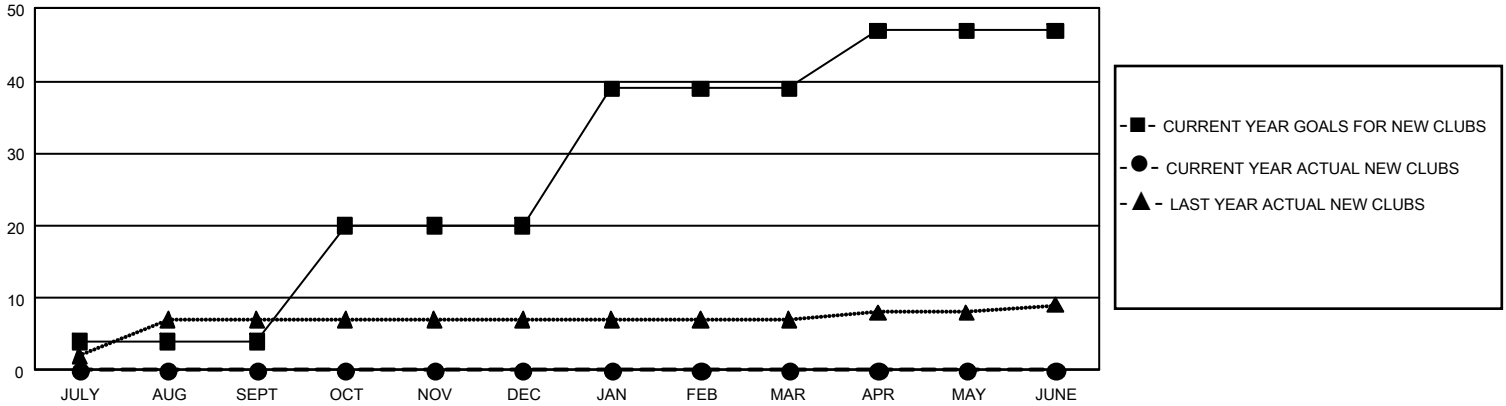
## GAT Constitutional Area 5 - China

REPORT DOES NOT INCLUDE CLUBS IN UNDISTRICTED AREAS.

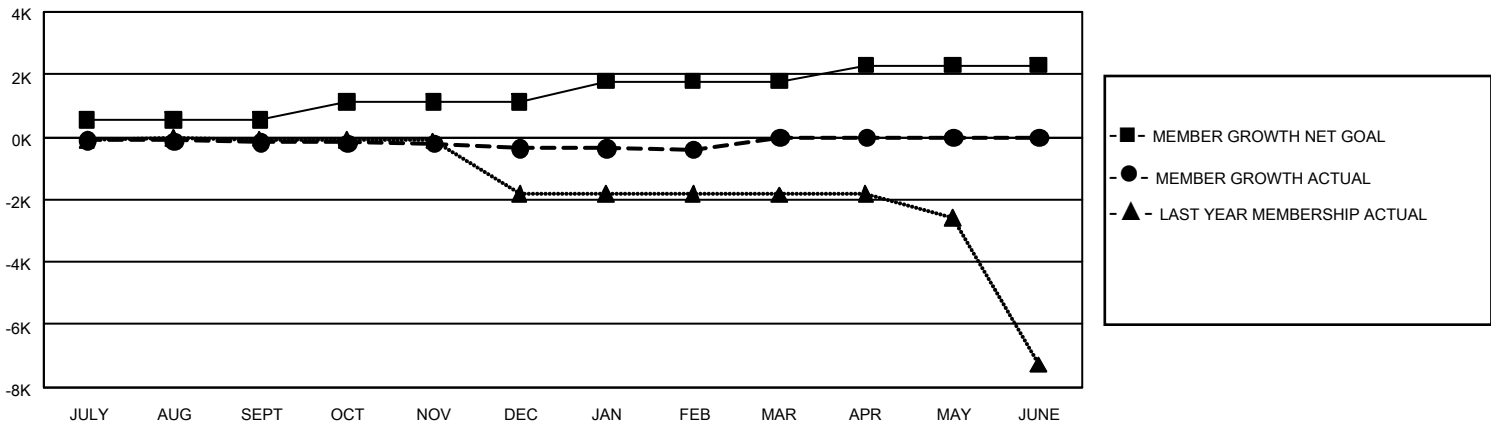
Clubs			
RESULTS FOR 2019-2020			
QUARTER	NEW CLUB GOAL	NEW CLUBS	DROPPED CLUBS
JULY/AUG/SEPT	12	0	40
OCT/NOV/DEC	48	0	1
JAN/FEB/MAR	57	0	0
APR/MAY/JUNE	24	0	0

Members			
RESULTS FOR 2019-2020			
QUARTER	MEMBER GROWTH NET GOAL	MEMBER GROWTH ACTUAL	DROPPED MEMBERS ACTUAL (including transfers)
JULY/AUG/SEPT	1,665	430	450
OCT/NOV/DEC	1,740	225	333
JAN/FEB/MAR	1,935	87	65
APR/MAY/JUNE	1,530	0	0

**GOALS AND ACTUAL NEW CLUBS CUMULATIVE**



**GOALS AND ACTUAL MEMBERS CUMULATIVE**



DROPPED CLUBS: 41	192 CLUBS OF 1,400 ADDED 1 OR MORE NEW MEMBERS	<b>GENDER DISTRIBUTION</b>
<b>DROPPED MEMBERS</b>		MALE            22,828 (62.46%)
DECEASED            7		FEMALE        13,721 (37.54%)
CLUB CANCELLED    17	<a href="#">CLICK HERE FOR CUMULATIVE MEMBERSHIP DATA</a>	TOTAL FAMILY UNIT MEMBERS            2,387
OTHER                823		FAMILY MEMBERS PAYING HALF DUES            1,230
<b>TOTAL                847</b>		